




SAFETY TUBS®

INDEPENDENCE. SAFETY. COMFORT. CONVENIENCE.

THE FREEDOM

will change your life

Safety Tubs®, the world leader in acrylic walk-in bathtubs, makes it easy to get in and out of the tub and enjoy the comfort of bathing. Everything about a Safety Tub® is designed to give you the freedom to bathe – on your own – in safety, comfort and convenience. Simply walk-in, close the door and relax with a warm soak or a swirling whirlpool massage.

PEACE OF MIND

comes from safe bathing

If safe and easy bathing is a concern to you and your loved ones, a Safety Tub® is perfect for you. Safety Tubs® accessible design allows everyone in the family – including those experiencing age and mobility challenges – to enjoy safe, luxurious soaks and massages. The low entry, built-in safety bar and slip-resistant tub floor are just a few features that make bathing safe with a Safety Tub®.

THE COMFORT

alleviates aches and pains

Safety Tubs® are great for arthritis, rheumatism, back pain and other common aches and pains. You will notice a difference in how you feel after just one warm, deep soak or therapeutic massage. Used regularly, the Safety Tub® will literally transform your life.



SAFETY TUBS®

INDEPENDENCE. SAFETY. COMFORT. CONVENIENCE.

If you've been missing the comfort of bathing

... because it's simply too hard to get in and out, Safety Tubs® walk-in baths are perfect for you.

- Patented T5™ Door System Technology guarantees a watertight seal
- Patent pending Minute Drain™ fast water removal system
- 17" chair height, built-in seat
- Built-in safety bar
- Slip-resistant tub floor
- Therapeutic whirlpool and air massage systems
- Chromatherapy
- Aromatherapy
- Neck pillow
- In-line heater
- Sanitary cleaning system - Ozone
- Revolutionary tub construction for easy access, comfort and full-body bathing
- Premium faucet with hand-held shower
- All models designed to fit into standard tub spaces

ST6032.177



Model: ST6032.177

Acrylic Safety Tub®

Size: 60" long x 32" wide x 37" high

Operating Capacity: 80 gallons

DEEP, SPACIOUS, AND LUXURIOUS

premium acrylic walk-in tub

Colors

White and Biscuit

Included

- Patented T5™ Door System Technology
- Color matched drain and overflow
- Color matched safety bar
- Slip-resistant tub floor

Whirlpool Options*Jet Massage System*

- Premium adjustable jet system
- Deluxe back massage
- Legs only massage
- Self-cleaning Sanitary System – Ozone

Air Bubble Massage System

- Variable speed controls
- Five Star air bubble system
- Quiet variable speed heated blower

Dual Massage System

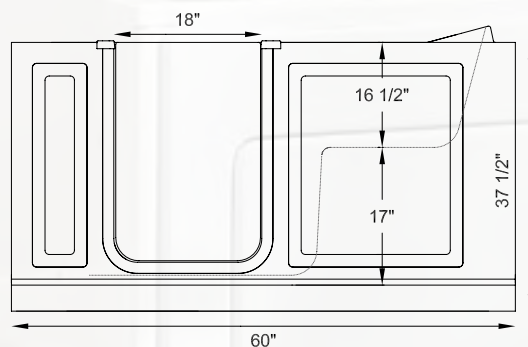
- Premium adjustable jet system
- Deluxe back massage
- Legs only massage
- Five Star air bubble system
- Quiet variable speed heated blower
- Neck pillow
- Self-cleaning Sanitary System – Ozone

Notes

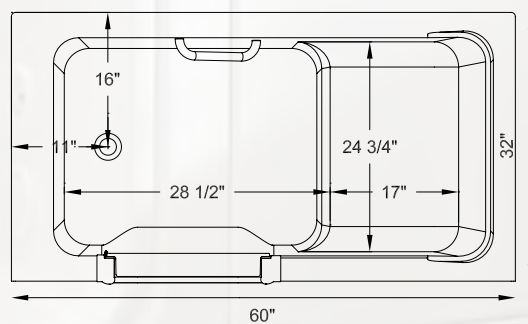
- Also available as soaking tub

Other Options

- Minute Drain™ fast water removal system
- In-line heater for jet and dual systems
- Chromatherapy - multicolored bath lights
- Aromatherapy - fragrance system
- Neck pillow (included with dual massage)
- Premium faucet with personal shower
- Decorative grab bar with handshower glide
- Anti-scalding valve
- Left hand or right hand door
- Tile or Flat Wall Surround System



Front View



Top View

ST6032



Model: ST6032

Acrylic Safety Tub®

Size: 60" long x 32" wide x 32" high

Operating Capacity: 70 gallons

Colors

White and Biscuit

Included

- Patented T5™ Door System Technology
- Color matched drain and overflow
- Color matched safety bar
- Slip-resistant tub floor

Whirlpool Options*Jet Massage System*

- Premium adjustable jet system
- Deluxe back massage
- Legs only massage
- Self-cleaning Sanitary System – Ozone

Air Bubble Massage System

- Variable speed controls
- Five Star air bubble system
- Quiet variable speed heated blower

Dual Massage System

- Premium adjustable jet system
- Deluxe back massage
- Legs only massage
- Five Star air bubble system
- Quiet variable speed heated blower
- Neck pillow
- Self-cleaning Sanitary System – Ozone

Notes

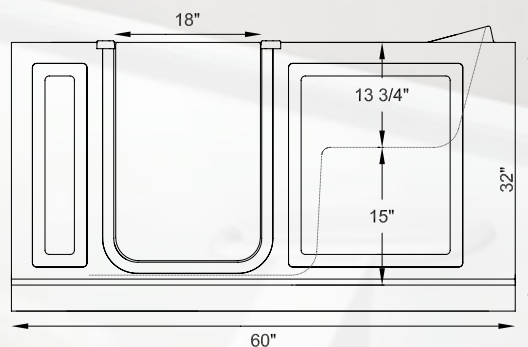
- Also available as soaking tub

Other Options

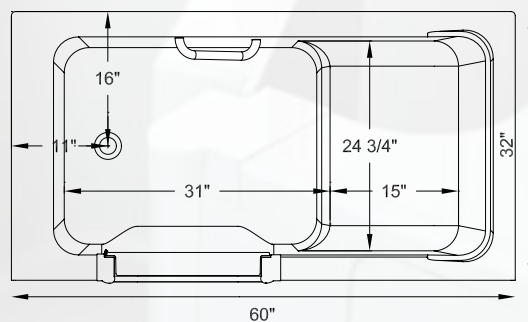
- Minute Drain™ fast water removal system
- In-line heater for jet and dual systems
- Chromatherapy - multicolored bath lights
- Aromatherapy - fragrance system
- Neck pillow (included with dual massage)
- Premium faucet with personal shower
- Decorative grab bar with handshower glide
- Anti-scalding valve
- Left hand or right hand door
- Tile or Flat Wall Surround System

ROOMY AND COMFORTABLE

premium acrylic walk-in tub



Front View



Top View

ST5130



Model: ST5130

Acrylic Safety Tub®

Size: 51" long x 30" wide x 37" high

Operating Capacity: 60 gallons

PRACTICAL AND MID-SIZED

premium acrylic walk-in tub

Colors

White and Biscuit

Included

- Patented T5™ Door System Technology
- Color matched drain and overflow
- Color matched safety bar
- Slip-resistant tub floor

Whirlpool Options*Jet Massage System*

- Premium adjustable jet system
- Deluxe back massage
- Legs only massage
- Self-cleaning Sanitary System – Ozone

Air Bubble Massage System

- Variable speed controls
- Five Star air bubble system
- Quiet variable speed heated blower

Dual Massage System

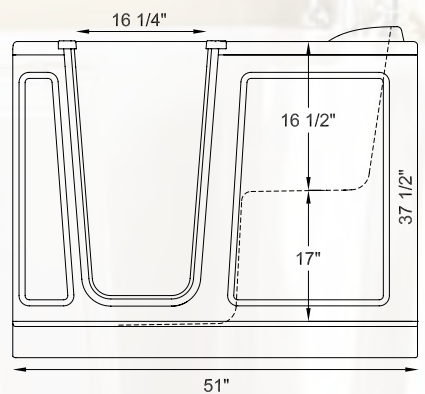
- Premium adjustable jet system
- Deluxe back massage
- Legs only massage
- Five Star air bubble system
- Quiet variable speed heated blower
- Neck pillow
- Self-cleaning Sanitary System – Ozone

Notes

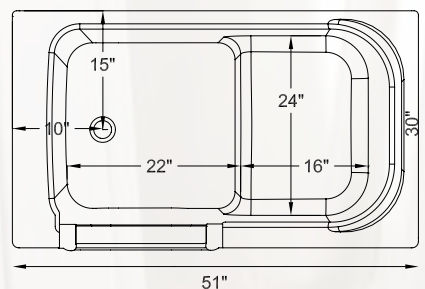
- Also available as soaking tub

Other Options

- Minute Drain™ fast water removal system
- In-line heater for jet and dual systems
- Chromatherapy - multicolored bath lights
- Aromatherapy - fragrance system
- Neck pillow (included with dual massage)
- Premium faucet with personal shower
- Decorative grab bar with handshower glide
- Anti-scalding valve
- Left hand or right hand door
- Extension Kit to fit 60" opening
- End Panel
- Tile or Flat Wall Surround System



Front View



Top View

ST5126



Model: ST5126

Acrylic Safety Tub®

Size: 51" long x 26" wide x 37" high

Operating Capacity: 45 gallons

Colors

White and Biscuit

Included

- Patented T5™ Door System Technology
- Color matched drain and overflow
- Color matched safety bar
- Slip-resistant tub floor

Whirlpool Options*Jet Massage System*

- Premium adjustable jet system
- Deluxe back massage
- Legs only massage
- Self-cleaning Sanitary System – Ozone

Air Bubble Massage System

- Variable speed controls
- Five Star air bubble system
- Quiet variable speed heated blower

Dual Massage System

- Premium adjustable jet system
- Deluxe back massage
- Legs only massage
- Five Star air bubble system
- Quiet variable speed heated blower
- Neck pillow
- Self-cleaning Sanitary System – Ozone

Notes

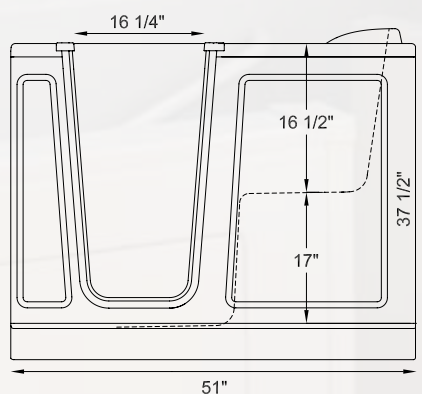
- Also available as soaking tub

Other Options

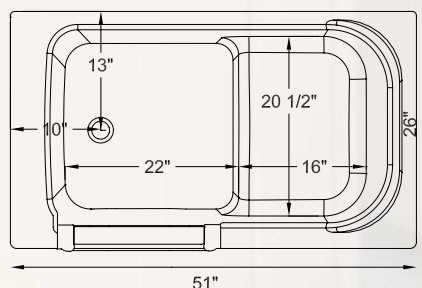
- Minute Drain™ fast water removal system
- In-line heater for jet and dual systems
- Chromatherapy - multicolored bath lights
- Aromatherapy - fragrance system
- Neck pillow (included with dual massage)
- Premium faucet with personal shower
- Decorative grab bar with handshower glide
- Anti-scalding valve
- Left hand or right hand door
- Extension Kit to fit 60" opening
- End Panel
- Tile or Flat Wall Surround System

SPACE FRIENDLY

premium acrylic walk-in tub



Front View



Top View

ST4828



Model: ST4828*Acrylic Safety Tub®*

Size: 48" long x 28" wide x 38" high

Operating Capacity: 45 gallons

Colors

White

Included

- Patented T5™ Door System Technology
- Color matched drain and overflow
- Color matched safety bar
- Slip-resistant tub floor

Whirlpool Options*Jet Massage System*

- Premium adjustable jet system
- Deluxe back massage
- Legs only massage
- Self-cleaning Sanitary System – Ozone

Air Bubble Massage System

- Variable speed controls
- Five Star air bubble system
- Quiet variable speed heated blower

Dual Massage System

- Premium adjustable jet system
- Deluxe back massage
- Legs only massage
- Five Star air bubble system
- Quiet variable speed heated blower
- Neck pillow
- Self-cleaning Sanitary System – Ozone

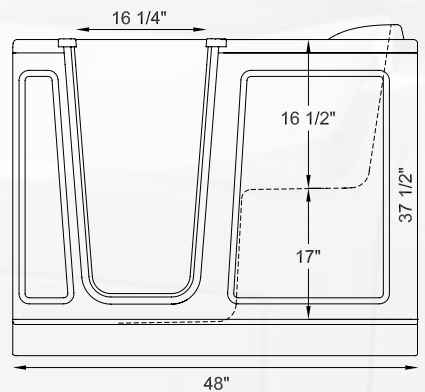
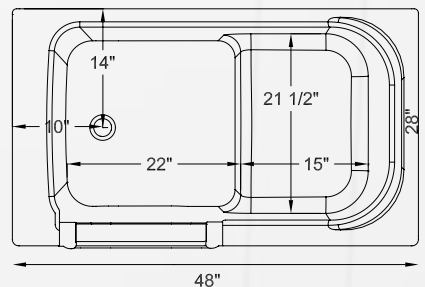
Notes

- Also available as soaking tub

Other Options

- Minute Drain™ fast water removal system
- In-line heater for jet and dual systems
- Chromatherapy - multicolored bath lights
- Aromatherapy - fragrance system
- Neck pillow (included with dual massage)
- Premium faucet with personal shower
- Decorative grab bar with handshower glide
- Anti-scalding valve
- Left hand or right hand door
- Extension Kit to fit 60" opening
- End Panel
- Tile or Flat Wall Surround System

VERSATILE AND COMPACT

premium acrylic walk-in tub**Front View****Top View**

S56030



Model: SS6030*Gelcoat Safety Tub®*

Size: 60" long x 30" wide x 37" high

Operating Capacity: 75 gallons

Colors

White and Biscuit

Included

- Color matched drain and overflow
- Color matched safety bar
- Slip-resistant tub floor

Whirlpool Options*Jet Massage System*

- Premium adjustable jet system
- Deluxe back massage
- Legs only massage
- Self-cleaning Sanitary System – Ozone

Air Bubble Massage System

- Variable speed controls
- Five Star air bubble system
- Quiet variable speed heated blower

Dual Massage System

- Premium adjustable jet system
- Deluxe back massage
- Legs only massage
- Five Star air bubble system
- Quiet variable speed heated blower
- Neck pillow
- Self-cleaning Sanitary System – Ozone

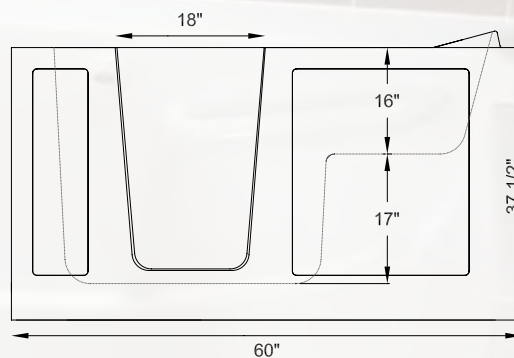
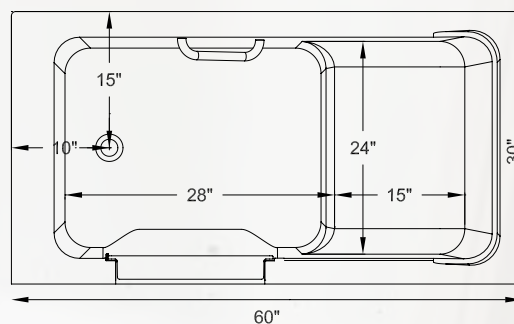
Notes

- Also available as soaking tub

Other Options

- Minute Drain™ fast water removal system
- In-line heater for jet and dual systems
- Chromatherapy - multicolored bath lights
- Aromatherapy - fragrance system
- Neck pillow (included with dual massage)
- Premium faucet with personal shower
- Decorative grab bar with handshower glide
- Anti-scalding valve
- Left hand or right hand door
- Tile or Flat Wall Surround System

DEEP, ROOMY AND COMFORTABLE

gelcoat walk-in tub**Front View****Top View**

SS5430



Model: SS5430*Gelcoat Safety Tub®*

Size: 54" long x 30" wide x 38" high*

Operating Capacity: 65 gallons

Colors

White and Biscuit

Included

- Color matched drain and overflow
- Color matched safety bar
- Slip-resistant tub floor

Whirlpool Options*Jet Massage System*

- Premium adjustable jet system
- Deluxe back massage
- Legs only massage
- Self-cleaning Sanitary System – Ozone

Air Bubble Massage System

- Variable speed controls
- Five Star air bubble system
- Quiet variable speed heated blower

Dual Massage System

- Premium adjustable jet system
- Deluxe back massage
- Legs only massage
- Five Star air bubble system
- Quiet variable speed heated blower
- Neck pillow
- Self-cleaning Sanitary System – Ozone

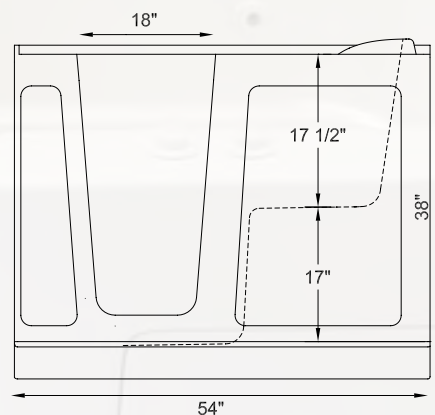
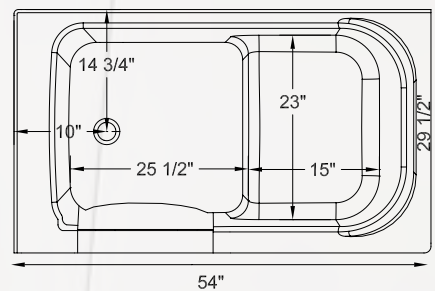
Notes

- Also available as soaking tub

Other Options

- Minute Drain™ fast water removal system
- In-line heater for jet and dual systems
- Chromatherapy - multicolored bath lights
- Aromatherapy - fragrance system
- Neck pillow (included with dual massage)
- Premium faucet with personal shower
- Decorative grab bar with handshower glide
- Anti-scalding valve
- Left hand or right hand door
- Extension Kit to fit 60" opening
- Tile or Flat Wall Surround System

PRACTICAL AND MID-SIZED

gelcoat walk-in tub**Front View****Top View**

SS5230



Model: SS5230*Gelcoat Safety Tub*®

Size: 52" long x 30" wide x 42" high*

Operating Capacity: 60 gallons

Colors

White and Biscuit

Included

- Color matched drain and overflow
- Color matched safety bar
- Slip-resistant tub floor

Whirlpool Options*Jet Massage System*

- Premium adjustable jet system
- Deluxe back massage
- Legs only massage
- Self-cleaning Sanitary System – Ozone

Air Bubble Massage System

- Variable speed controls
- Five Star air bubble system
- Quiet variable speed heated blower

Dual Massage System

- Premium adjustable jet system
- Deluxe back massage
- Legs only massage
- Five Star air bubble system
- Quiet variable speed heated blower
- Neck pillow
- Self-cleaning Sanitary System – Ozone

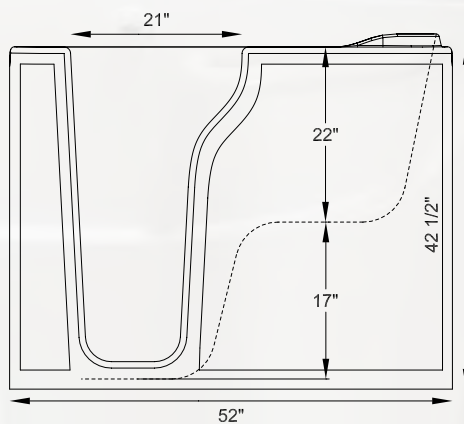
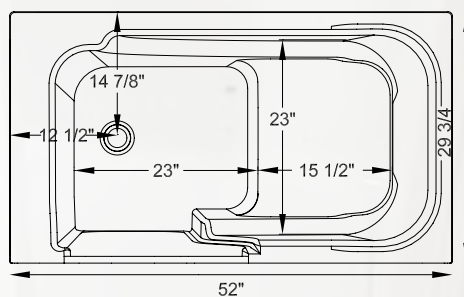
Notes

- Also available as soaking tub

Other Options

- Minute Drain™ fast water removal system
- In-line heater for jet and dual systems
- Chromatherapy - multicolored bath lights
- Aromatherapy - fragrance system
- Neck pillow (included with dual massage)
- Premium faucet with personal shower
- Decorative grab bar with handshower glide
- Anti-scalding valve
- Left hand or right hand door
- Extension Kit to fit 60" opening
- Tile or Flat Wall Surround System

EXTRA DEEP AND INNOVATIVE

gelcoat walk-in tub**Front View****Top View**

S54828



Model: SS4828*Gelcoat Safety Tub®*

Size: 48" long x 28" wide x 38" high*

Operating Capacity: 45 gallons

Colors

White and Biscuit

Included

- Color matched drain and overflow
- Color matched safety bar
- Slip-resistant tub floor

Whirlpool Options*Jet Massage System*

- Premium adjustable jet system
- Deluxe back massage
- Legs only massage
- Self-cleaning Sanitary System – Ozone

Air Bubble Massage System

- Variable speed controls
- Five Star air bubble system
- Quiet variable speed heated blower

Dual Massage System

- Premium adjustable jet system
- Deluxe back massage
- Legs only massage
- Five Star air bubble system
- Quiet variable speed heated blower
- Neck pillow
- Self-cleaning Sanitary System – Ozone

Notes

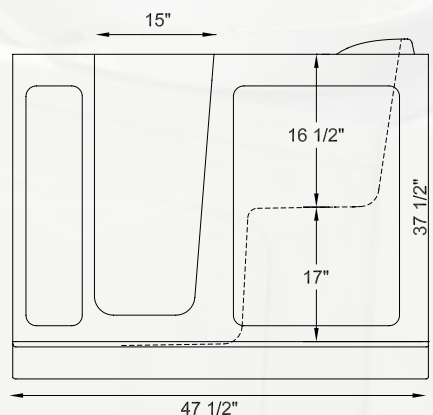
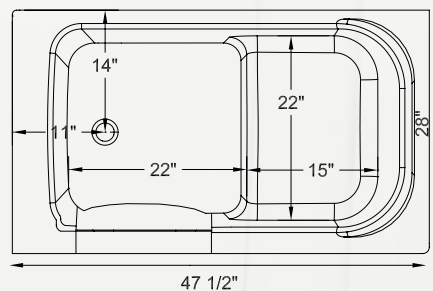
- Also available as soaking tub

Other Options

- Minute Drain™ fast water removal system
- In-line heater for jet and dual systems
- Chromatherapy - multicolored bath lights
- Aromatherapy - fragrance system
- Neck pillow (included with dual massage)
- Premium faucet with personal shower
- Decorative grab bar with handshower glide
- Anti-scalding valve
- Left hand or right hand door
- Extension Kit to fit 60" opening
- Tile or Flat Wall Surround System

VERSATILE AND COMPACT

gelcoat walk-in tub

**Front View****Top View**

T5™ TECHNOLOGY



Revolutionary T5™ Door Frame

Provides strength and durability

- Maintains tub strength with moisture changes in the bathroom
- Provides a completely flat surface for a watertight seal
- Integral hinge channel for absolute door alignment
- Dedicated seal track allows for easy field replacement
- Non-corrosive, color-matched
- Aluminum construction

Santoprene® T5™ Watertight Door Seal

Guaranteed not to leak, for life

- Highly durable material maintains shape for years of trouble free use
- Specially engineered bulb and base ensures watertight performance
- Resistant to UV, fatigue, water, acids, oils and lubricants
- Easy to clean

Robust T5™ Door Hinge

Proper functionality, always

- Premium grade aluminum for strength and durability
- Stainless steel stake pin for longevity
- Non-corrosive color-matched finish
- Engineered for smooth operation

Soft Touch™ T5™ Door Handle System

Effortless and easy-to-use

- Remarkably engineered for watertight seal
- Stainless steel sloped strike plate insures secure closure
- Ergonomically styled handle for comfort and ease of operation
- Specially designed for minimal closing effort

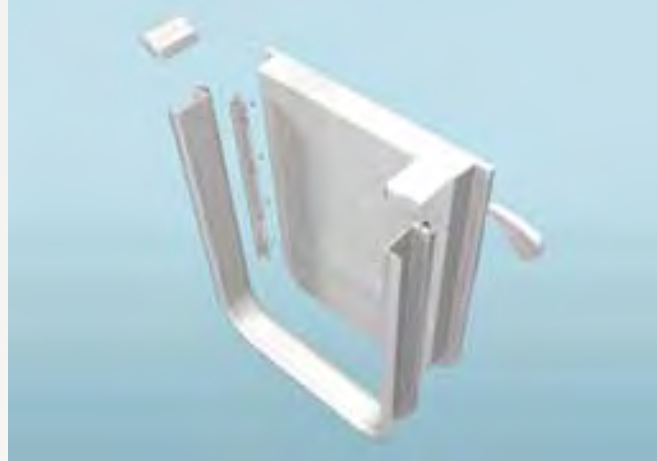
Elegantly Styled T5™ Finishing Caps

Beautiful attention to detail

- Provides closure to top of door seal to eliminate water penetration
- Non-corrosive color-matched aluminum
- Provides finish detail to the T5™ door system

PATENTED T5™ DOOR SYSTEM

advanced technology



HYDROTHERAPY

WHIRLPOOL OPTIONS

turn your bath into a health spa

Once used only in health spas, warm whirlpool bath therapy is now a common and effective treatment for symptoms of arthritis, back pain and other common ailments. While soaking in warm water alone increases circulation and helps realize the relief of certain types of pain, the addition of the Premium Jet Massage and Five Star Air Bubble Massage systems increases the overall health benefits of a warm bath.

THE LATEST TECHNOLOGY

for a complete bathing experience



Jet Massage System™

The water will revive you

Tailor the effects of your whirlpool experience with the Deluxe Back Massage and Legs Only Massage systems to achieve a new level of comfort and results. The Legs Only Massage allows you to direct the flow of water solely to the well area of the tub to carefully massage your lower extremities. This feature enables you to fill the bottom half of the tub only for a quick leg bath. The Deluxe Back Massage consists of multiple, strategically positioned jets for the most comfortable and therapeutic lower back massage available. Includes the self-cleaning sanitary system - Ozone.



Air Bubble Massage System™

Soothing your body and mind

The Five Star Air Bubble System sends thousands of air bubbles bouncing throughout the tub to create a soft, full-body champagne bath. Unlike most air systems, the Safety Tubs® Five Star Air Bubble System forces bubbles farther and deeper into the bathing area for the most complete, gentle massage. You'll find yourself relaxing fully as you enjoy the sensation of a caressing skin massage.



Dual Massage System™

The ultimate body therapy

Perhaps you'll prefer the light, soft bubbles of the Five Star Air Bubble System bath one day, and the invigorating hydrotherapy of the Premium Jet Massage System the next, or want to experience both at once. With the Dual Massage System, you can set the mood with a touch of a button by selecting either or both at once for the ultimate bathing experience. Includes air-filled neck pillow and self-cleaning sanitary system - Ozone.

OPTIONS



Chromatherapy

Healing with color and light

Chromatherapy is the use of color and light that has been determined to have a positive effect on both health and mental well-being. Safety Tubs® Chromatherapy options features multicolored LED lights positioned in the basin of the tub that illuminate the water and enhance your bathing experience.



Aromatherapy

Enjoy the mood

Combine hydrotherapy and aromatherapy for the ultimate in relaxation. Positioned on the deck of the tub, the aromatherapy system automatically distributes your choice of fragrances throughout your Safety Tub® while running the jet or air bubble massage systems. The starter kit contains four fragrances which can be replenished at local department stores.



Self-Cleaning Sanitary System (Ozone)

Eliminate the maintenance

Say "goodbye" to the maintenance needed to enjoy a clean whirlpool system. Included with jet and dual massage systems, Ozone is the most effective cleaning system available for bathing environments today. Approved by the NSF, FDA and EPA and required in all commercial bathing environments, this safe and effective sanitation system automatically oxidizes and eliminates disease-causing microorganisms in the tub when the whirlpool system is activated.



In-line Water Heater

Maintain your water temperature

No need to continuously add warm water to your bath. Designed for the jet and dual massage systems, the in-line heater from Safety Tubs® is automatically activated to maintain the water temperature longer so you can relax and enjoy the ultimate bathing experience.

STEXTKIT



Model: STEXTKIT

For ST5130, ST5126
and ST4828 Safety Tubs®

THE EXTENSION KIT FOR A PERFECT FIT

Colors

White and Biscuit

...every time

Custom Fit Extension Kit

- Converts 51" and 48" tubs to fit into standard 60" spaces
- Left hand or right hand installation
- Acrylic construction
- Works with 51" x 26", 51" x 30" and 48" x 28" acrylic tub models: soakers, jet massage, air massage and dual massage
- Easy assembly
- Perfect fit

**Model: SSEXTKIT**

For Gelcoat SS5430, SS5230
and SS4828 Safety Tubs®

Colors

White and Biscuit

Custom Fit Extension Kit

- Converts 54", 52" and 48" tubs to fit in standard 60" spaces
- Left hand or right hand installation
- Gelcoat construction
- Works with 54" x 30", 52" x 30" and 48" x 28" gelcoat tub models: soakers, jet massage, air massage and dual massage
- Easy assembly
- Perfect fit



MINUTE DRAIN™



Fast Draining, No Waiting

The Minute Drain™ is a powered pump that evacuates water from our walk-in tubs faster than typical drains, which means you spend less time waiting. With Safety Tubs® Minute Drain™, you can walk out of the tub when you are ready.

Eight Times Faster

Designed to work independently or together with the manual waste and overflow assembly, the Minute Drain™ is up to **8 times faster than conventional draining systems**. And since this system ties into the manual waste and overflow and plugs directly into the wall (in the same way as the whirlpool pump), there is no additional plumbing required.

The Minute Drain™ is equipped with a pump, safety suction and on/off electronic control which allows you to activate the system with a touch of a button to quickly and completely drain your Safety Tub®.

Breakthrough Technology

Designed by our team of world class engineers, Safety Tubs® continues to revolutionize the industry with the introduction of this patent pending design that significantly enhances the walk-in tub bathing experience.

MINUTE DRAIN™ FAST WATER REMOVAL SYSTEM

...walk out when you're ready



INNOVATIONS

REVOLUTIONARY PATENTED DOOR SYSTEM

for safe, easy access

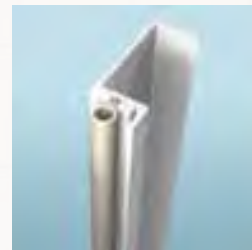
Safety Tubs® patented T5™ door system eliminates the need to step over the front of the tub and allows safe and effortless entry. Simply walk in, close the door and relax! No straining to get in or out of the tub.



WATERTIGHT DOOR SEAL

with a lifetime guarantee

Best of all, the T5™ door system will not warp, rust or leak. The watertight seal is guaranteed for life. It's an ingenious solution that doesn't need special care or maintenance.



PREMIUM BATH CONSTRUCTION

the best bathing materials

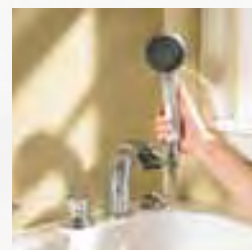
Safety Tubs® offers Acrylic walk-in bathtub construction with a free standing metal support frame, a first for walk-in bathtubs that offer 17" chair height seats. This is the material of choice for leading bathtub manufacturers and trade professionals across the country. Germ and stain resistant surfaces, better heat retaining properties and durability are just a few of the many benefits of acrylic.



SHOWER IN YOUR SAFETY TUB®

wall mounted or hand-held

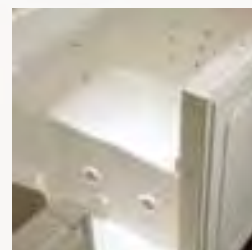
Safety Tubs® optional faucet with hand-held shower allows you to convert your bathtub into an easy-to-use and attractive shower. Use it standing up or sitting down for peace of mind and security while bathing.



17" CHAIR HEIGHT BUILT-IN SEAT

for easy up and down

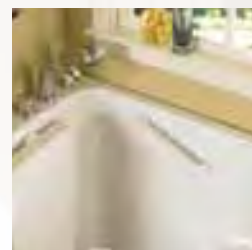
The built-in, contoured, chair height seat means you won't find yourself struggling to get up or down. Safety Tubs® are nearly twice as deep as regular bathtubs so you'll enjoy much more room to soak. Submerge yourself and enjoy a luxurious bathing experience.



BUILT-IN SAFETY BAR & SLIP RESISTANT FLOOR

for safety and convenience

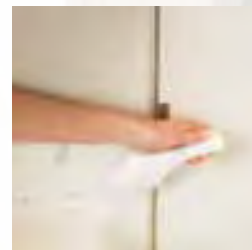
The built-in safety bar and slip-resistant tub floor adds even more security and further increases your peace of mind. Every detail about the Safety Tub® is designed for your independence, safety, comfort and convenience.



NEW HANDLE

ergonomic design for easy use

Safety Tubs® ergonomically designed T5™ door handle allows for you to easily open and close the door regardless of your physical strength or condition. This unique handle system including the stainless steel sloped strikeplate provides full leverage and insures secure closure.



TUB CONFIGURATION:

1. Patented T5™ door system with ergonomic handle
2. Chair height contoured seat
3. Hand-held shower
4. Built-in safety bar
5. Faucet/motor access panels
6. Hydro massage jets
7. Air bubble massage jets
8. Color matched waste and overflow
9. Slip-resistant floor
10. Whirlpool & light controls
11. Aromatherapy basin
12. Ozone jet
13. Minute Drain™
14. Minute Drain Control
15. Chromotherapy light
16. Deluxe back jets
17. Neck pillow

SIZES: (L x W x H)

Acrylic:

60" x 32" x 37"

60" x 32" x 32"

51" x 30" x 37"

51" x 26" x 37"

48" x 28" x 38"

Gelcoat:

60" x 30" x 37"

54" x 30" x 38"

52" x 30" x 42"

48" x 28" x 38"

STYLES:

Soaker (Tub Only)

Jet Massage System™

Air Bubble Massage System™

Dual Massage System™

STRUCTURE:

Metal support frame

